

Saline Waste Water Treatment Plant Equipment Status Report



Form Revised 05 / 17 / 2021

Equipment/Process/Resource	Status	Timeline
Influent and Grit Removal	Yellow	Two to thirty-six months
Comments: Yellow - Install automatic bar screen rake to reduce influent backup and surge (Phase I) Yellow - Replace influent pumps (Phase I) Yellow - Repair bearing on grit mechanism (Midwest CO#1; requested May 17, 2021)		
Primary Clarifiers	Green	Three to six months; ongoing
Comments: Green - Regular maintenance and cleaning; target cleaning of internal components in summer 2021 Green - Sludge pump packing replaced		
RBCs	Green	Ongoing
Comments: Green - Regular maintenance and cleaning		
Secondary Clarifiers	Yellow	One to six months
Comments: Yellow - Contractor selected and bid awarded for sludge pump install (Bid awarded March 2021) Green - Secondary sludge and scum line cleaning completed Yellow - Consider cover for secondary clarifiers (Phase I)		

Status Key

Red: Not operating to design standards; **Yellow:** Operating but not to optimal standards; **Green:** Operating as designed
significant improvements/repairs needed issue has been identified and/or plan in place

Saline Waste Water Treatment Plant Equipment Status Report



Equipment/Process/Resource	Status	Timeline
Digestors	Red	One to twenty-four months
Comments: Yellow - Electrical repairs completed on flare, repairs pending on dehumidifier/chiller Red - Valve replacement scheduled as part of sludge pump project (est. summer 2021) Red - Overflow line cleaning necessary (est. summer 2021) Yellow - Replace existing cover (Phase I)		
Sludge Holding	Green	Ongoing
Comments: Green - Regular maintenance and cleaning Yellow - Planned installation of enclosures over sludge storage tank and implementation of new procedures to keep the tanks sealed on a more frequent basis		
Bioscrubbers and Odor Control	Yellow	Two to four months
Comments: Yellow - Weatherization project for bioscrubber; replace non-potable water pumps (Aug-Sept 2021) Green - Re-acclimated organisms and maintaining appropriate pH. (Completed April 2021) Green - Boiler/heat exchange repaired and air handler functioning. (Completed March 2021)		
Tertiary Filters and UV	Yellow	Ongoing
Comments: Yellow - Enhanced cleaning and maintenance of nova filters required until solids can be reduced through improvements to processes earlier in the system Green - All mechanical elements functioning as designed		

Status Key

Red: Not operating to design standards; significant improvements/repairs needed
Yellow: Operating but not to optimal standards; issue has been identified and/or plan in place
Green: Operating as designed

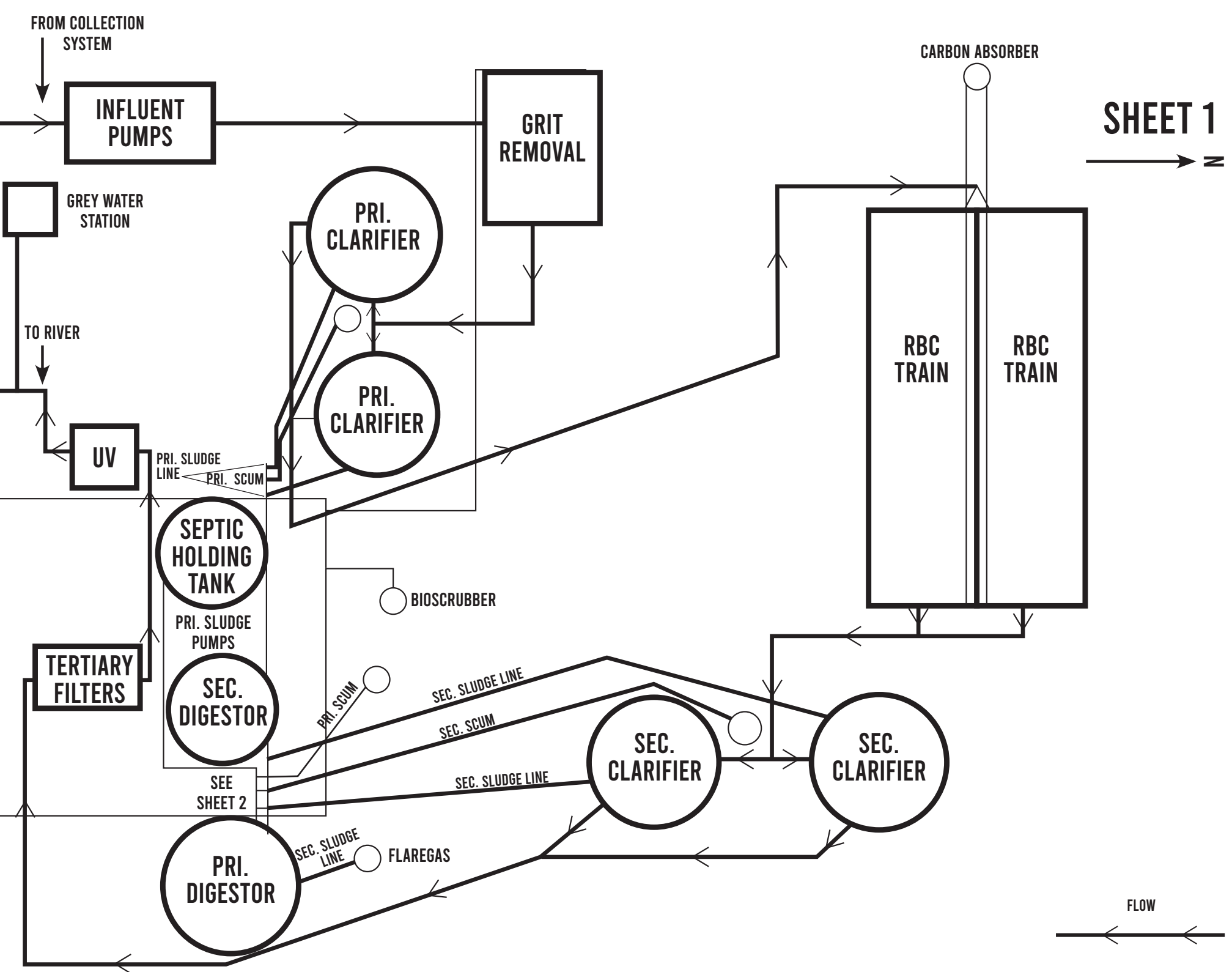
Saline Waste Water Treatment Plant Equipment Status Report



Equipment/Process/Resource	Status	Timeline
Human Behavior	Yellow	Three to six month
Comments: Yellow - Launch a public awareness campaign to improve education on how to reduce strain on existing systems. Green - Created citizen odor complaint survey to track time, location, conditions of peak odor		
Effluent	Green	Ongoing
Comments: Green - Currently meeting NPDES permit standards for effluent Yellow - Location and scope of work for additional chemical feed points for phosphorus removal completed implementation planned spring/summer 2021		
Additional Comments: Updates to this report will be provided monthly. This report is intended to be a public facing document and does not contain an engineering level of detail for the projects described. Additional questions may be directed to City Manager O'Toole at cotoole@cityofsaline.org . NOTE: The City does not receive outside septic.		

Status Key

Red: Not operating to design standards; **Yellow:** Operating but not to optimal standards; **Green:** Operating as designed
significant improvements/repairs needed issue has been identified and/or plan in place



SHEET 2

*BIRDS EYE VIEW



WALL

SEC.
SLUDGE

PRI.
SCUM

SEC.
SCUM

SEC.
SLUDGE

TO
FLOOR
DRAIN

FROZEN
VALVE

UP

TO OVERFLOW LINE

SEE
SHEET 3

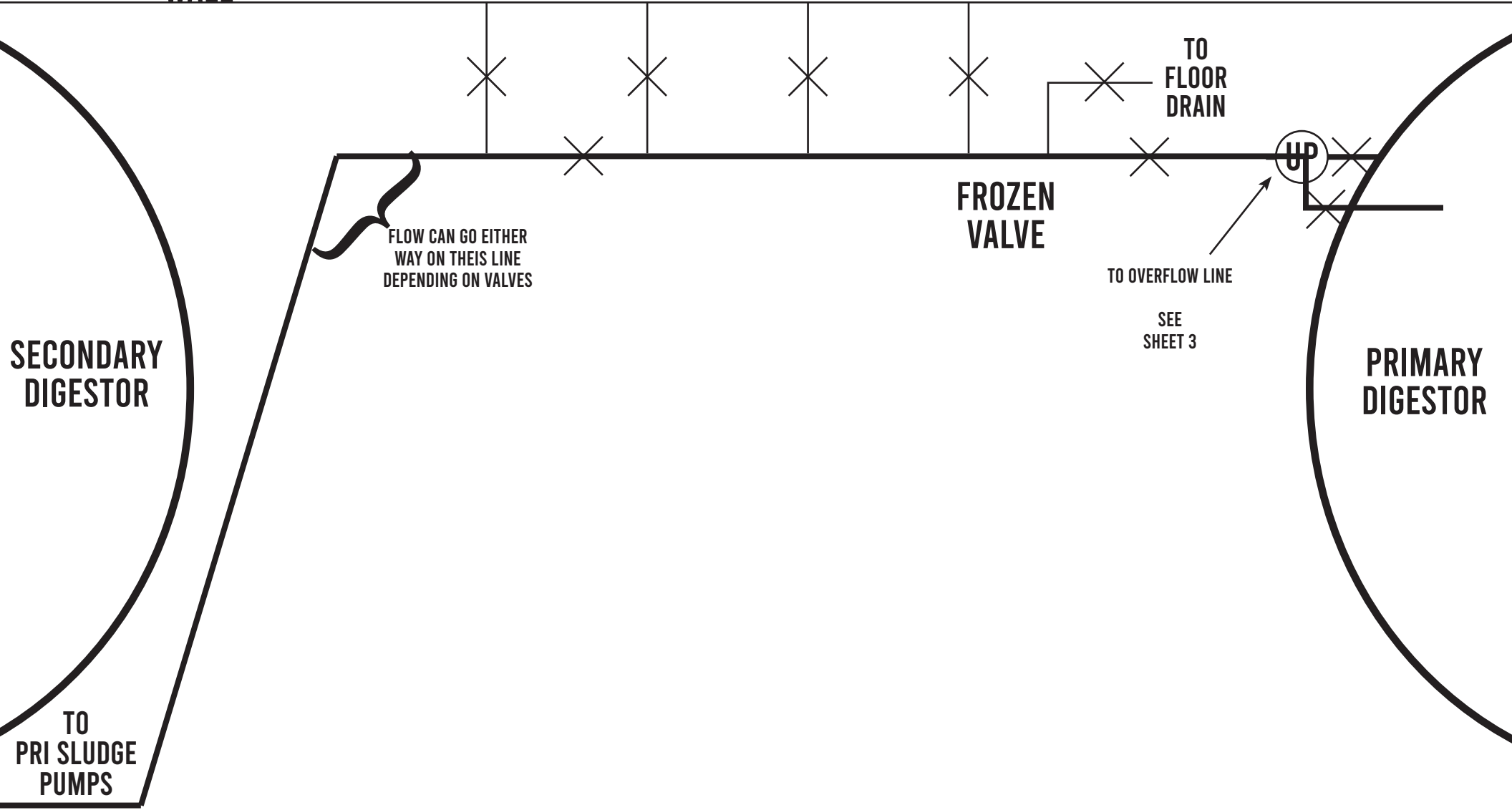
FLOW CAN GO EITHER
WAY ON THEIS LINE
DEPENDING ON VALVES

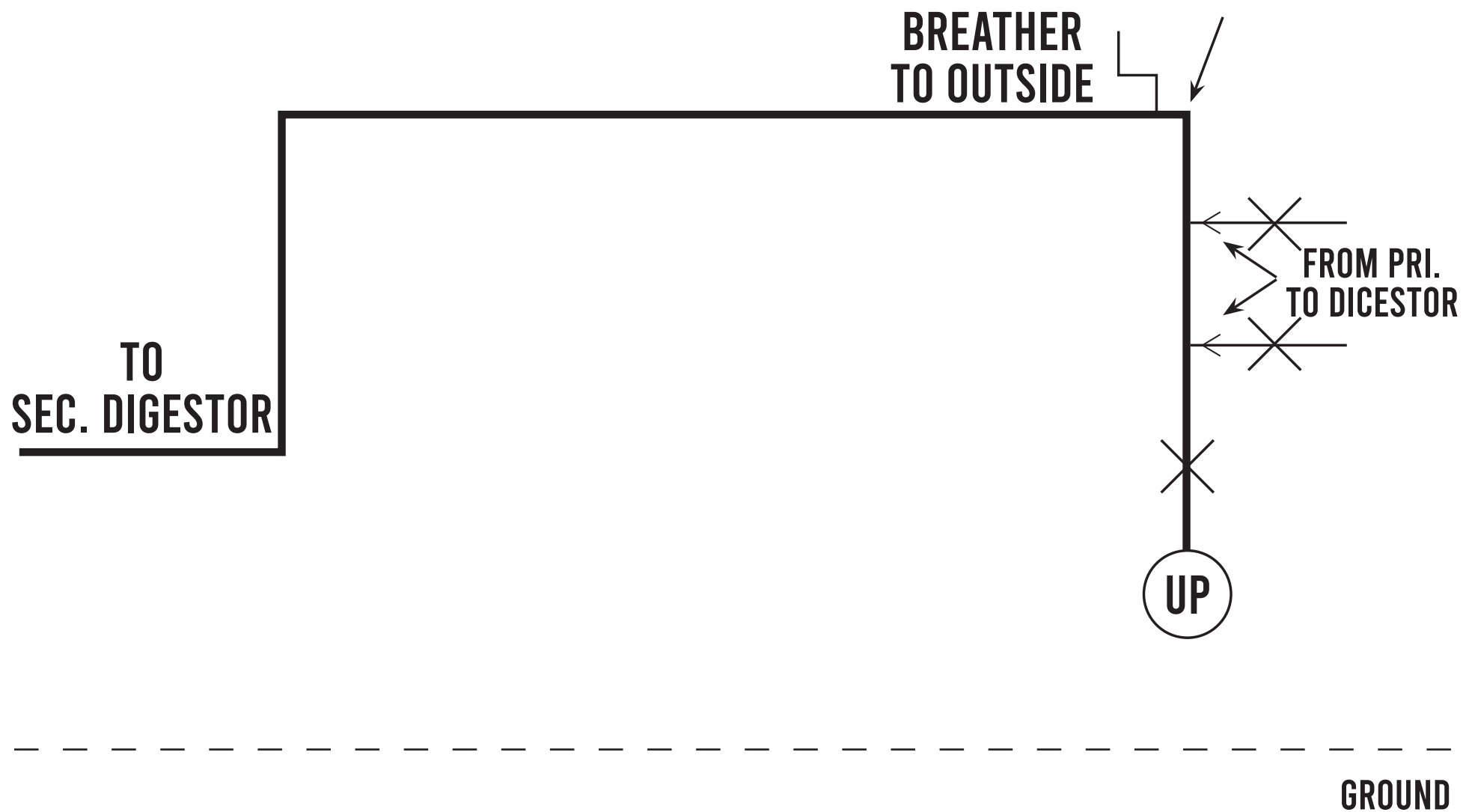
SECONDARY
DIGESTOR

PRIMARY
DIGESTOR

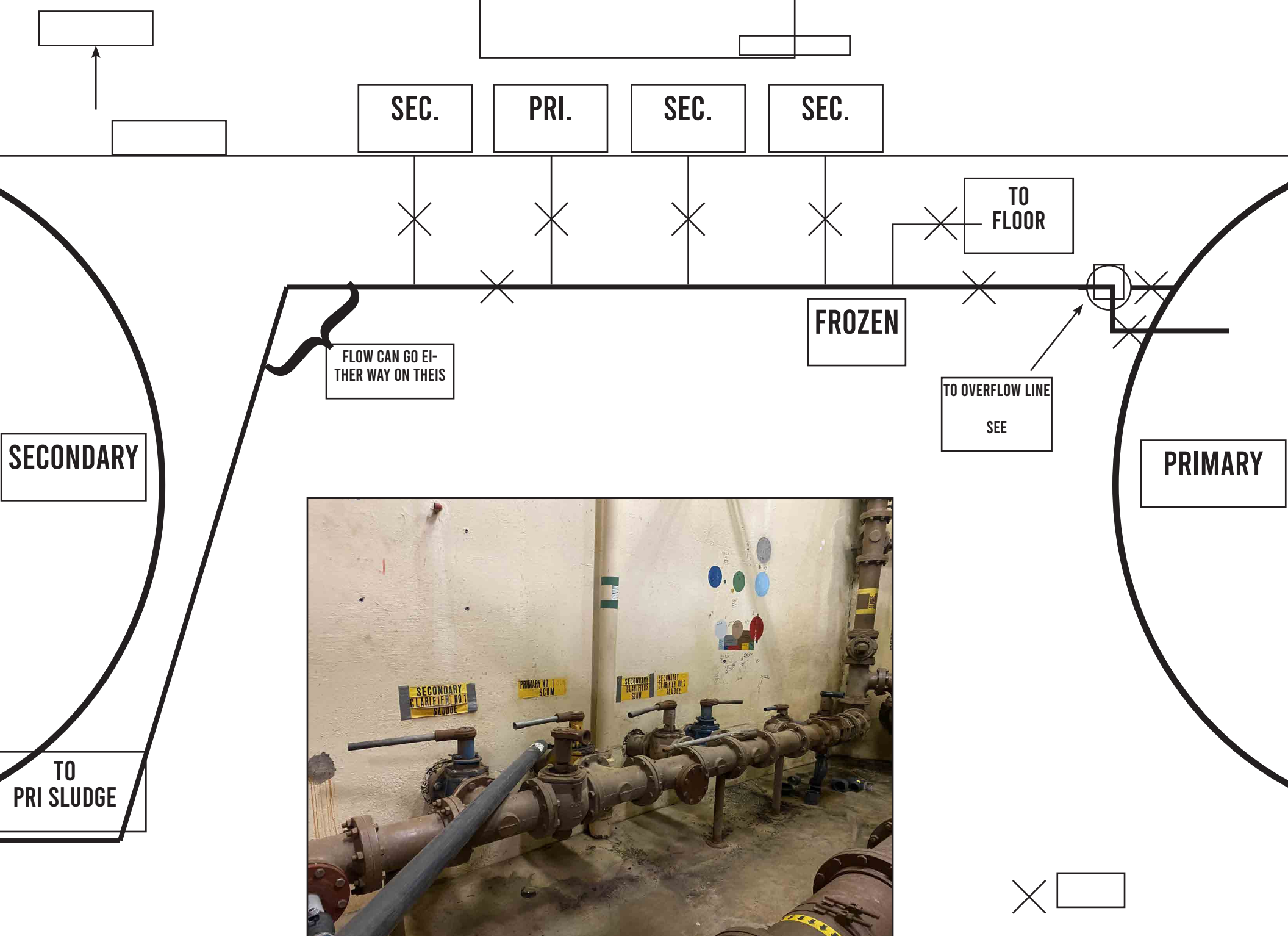
TO
PRI SLUDGE
PUMPS

✕ VALVE





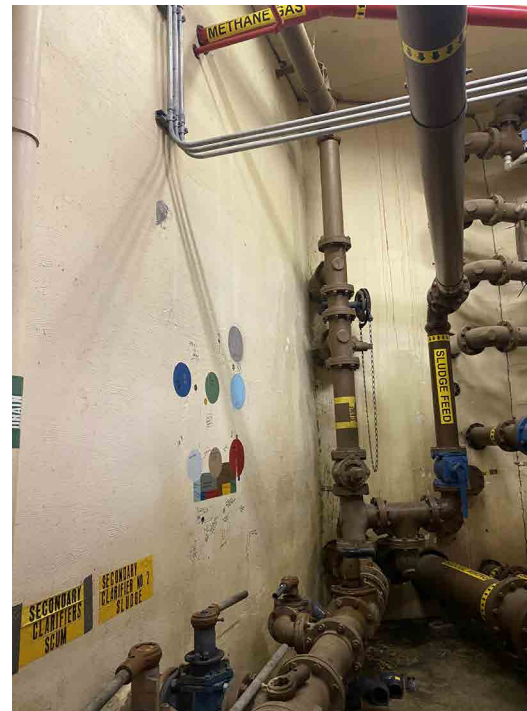
SHEET 3





**BREATHER
TO OUTSIDE**

**TO
SEC. DIGESTOR**



**FROM PRI.
TO DICESTOR**

UP