

Saline Waste Water Treatment Plant Equipment Status Report



Form Revised 12 / 17 / 2021

Equipment/Process/Resource	Status	Timeline
Influent and Grit Removal	Yellow	Two to thirty-six months
Comments: Yellow - Install automatic bar screen rake to reduce influent backup and surge (Phase I) Yellow - Replace influent pumps (Phase I) Green - Repaired bearing on grit mechanism (July 2021); replaced grit pump (September 2021)		
Primary Clarifiers	Yellow	Three to six months; ongoing
Comments: Green - Regular maintenance and cleaning Green - Repaired arm mechanism (August 2021) Yellow - Select system components approaching end of useful life Yellow - Sludge pump packing replaced; planned rebuild of pump (target spring 2022)		
RBCs	Green	Ongoing
Comments: Green - Regular maintenance and cleaning; reviewing new practices for monitoring bio-health		
Secondary Clarifiers	Yellow	Three to five months
Comments: Green - Secondary sludge and scum line cleaning completed winter 2021; secondary sludge pump installed and operating. Yellow - Considering covers for secondary clarifiers as part of future plant improvement phase.		

Status Key

Red: Not operating to design standards; significant improvements/repairs needed
Yellow: Operating but not to optimal standards; issue has been identified and/or plan in place
Green: Operating as designed

Saline Waste Water Treatment Plant Equipment Status Report



Equipment/Process/Resource	Status	Timeline
Digestors	Yellow	One to twenty-four months
Comments: Yellow - Electrical repairs completed on flare (March 2021), repairs pending on dehumidifier/chiller Green - Cleaning of interior lining completed (September 2021). Green - Over flow line and valves replaced as part of sludge pump program (June/July 2021) Red - Seal on existing cover failing to meet odor control standards; coordinating out of service time to drain, clean and perform welding spot repairs to improve seal.		
Sludge Holding	Green	Ongoing
Comments: Green - Regular maintenance and cleaning; sludge hauling performed late July 2021, next scheduled Oct. Green - Implemented new procedures to keep tanks sealed on a more frequent basis.		
Bioscrubbers and Odor Control	Yellow	Two to four months
Comments: Yellow - Weatherization project for bioscrubber; replaced non-potable water pumps (June 2021) Green - Re-acclimated organisms and maintaining appropriate pH. (Completed April 2021) Green - Boiler/heat exchange repaired and air handler functioning. (Completed March 2021)		
Tertiary Filters and UV	Yellow	Ongoing
Comments: Yellow - Maintenance contract executed August 2021, next maintenance late winter 2022 Green - All mechanical elements functioning as designed		

Status Key

Red: Not operating to design standards; significant improvements/repairs needed
Yellow: Operating but not to optimal standards; issue has been identified and/or plan in place
Green: Operating as designed

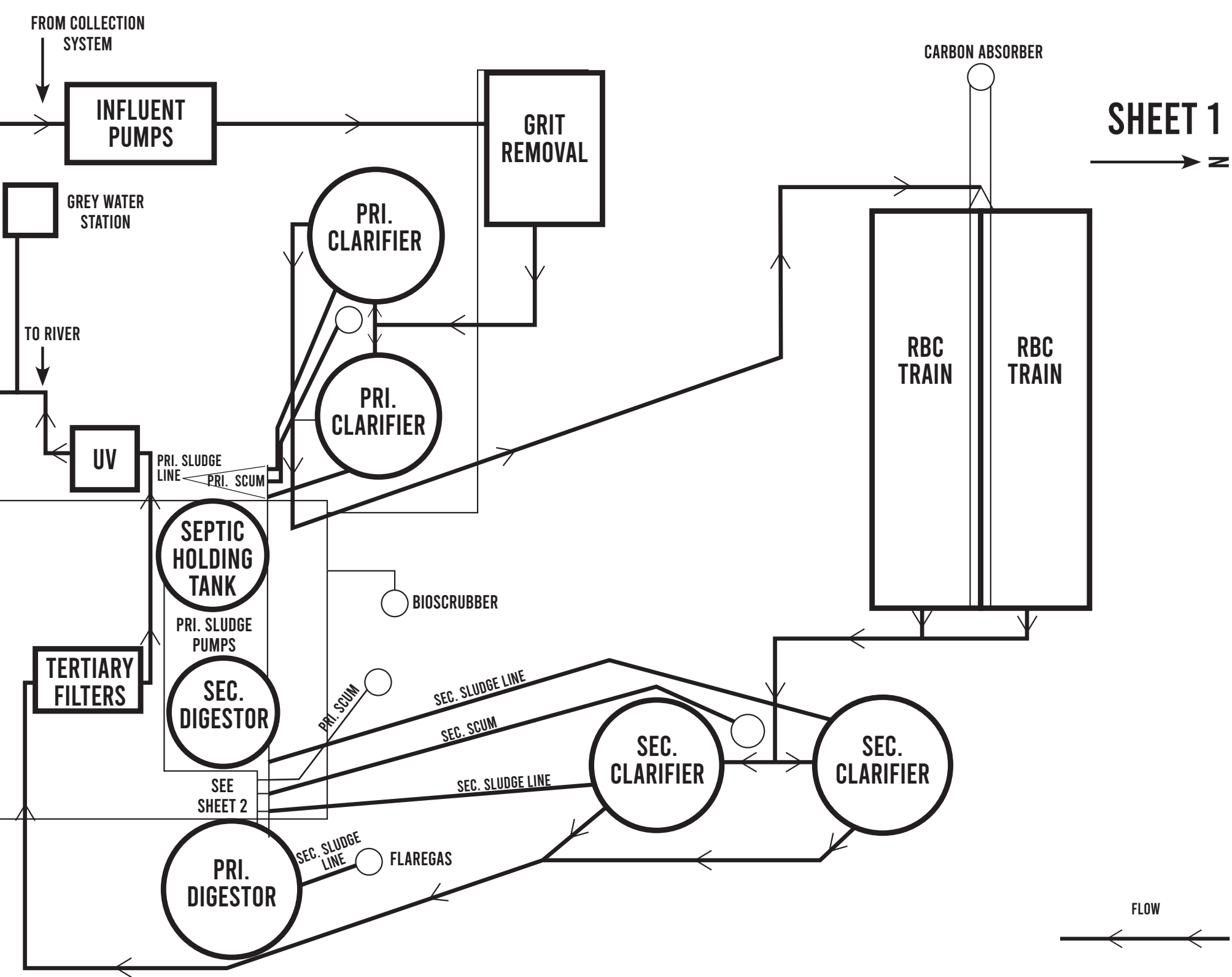
Saline Waste Water Treatment Plant Equipment Status Report



Equipment/Process/Resource	Status	Timeline
Human Behavior	Yellow	Three to six month
Comments: Yellow - Launch a public awareness campaign to improve education on how to reduce strain on existing systems Green - Created citizen odor complaint survey to track time, location, conditions of peak odor		
Effluent	Green	Ongoing
Comments: Green - Currently in compliance with NPDES limits following discovery of miscalculated phosphorus results. Green - Installed additional chemical feed point for phosphorus removal		
Additional Comments: The City WWTP does not receive outside septic.		

Status Key

Red: Not operating to design standards; Yellow: Operating but not to optimal standards; Green: Operating as designed
significant improvements/repairs needed issue has been identified and/or plan in place



SHEET 2

**BIRDS EYE VIEW*



WALL

SEC.
SLUDGE

PRI.
SCUM

SEC.
SCUM

SEC.
SLUDGE

TO
FLOOR
DRAIN

UP

TO OVERFLOW LINE

SEE
SHEET 3

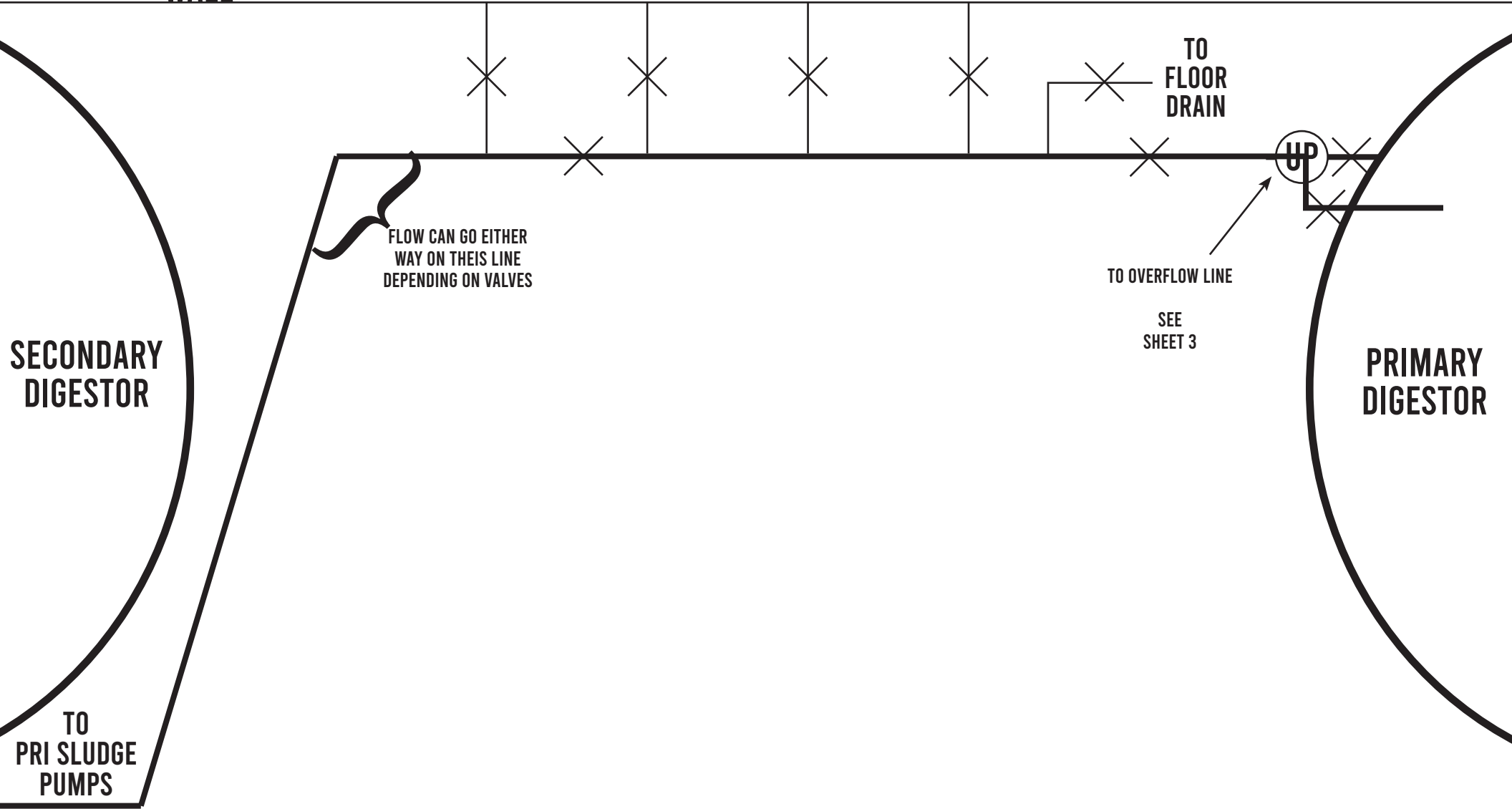
PRIMARY
DIGESTOR

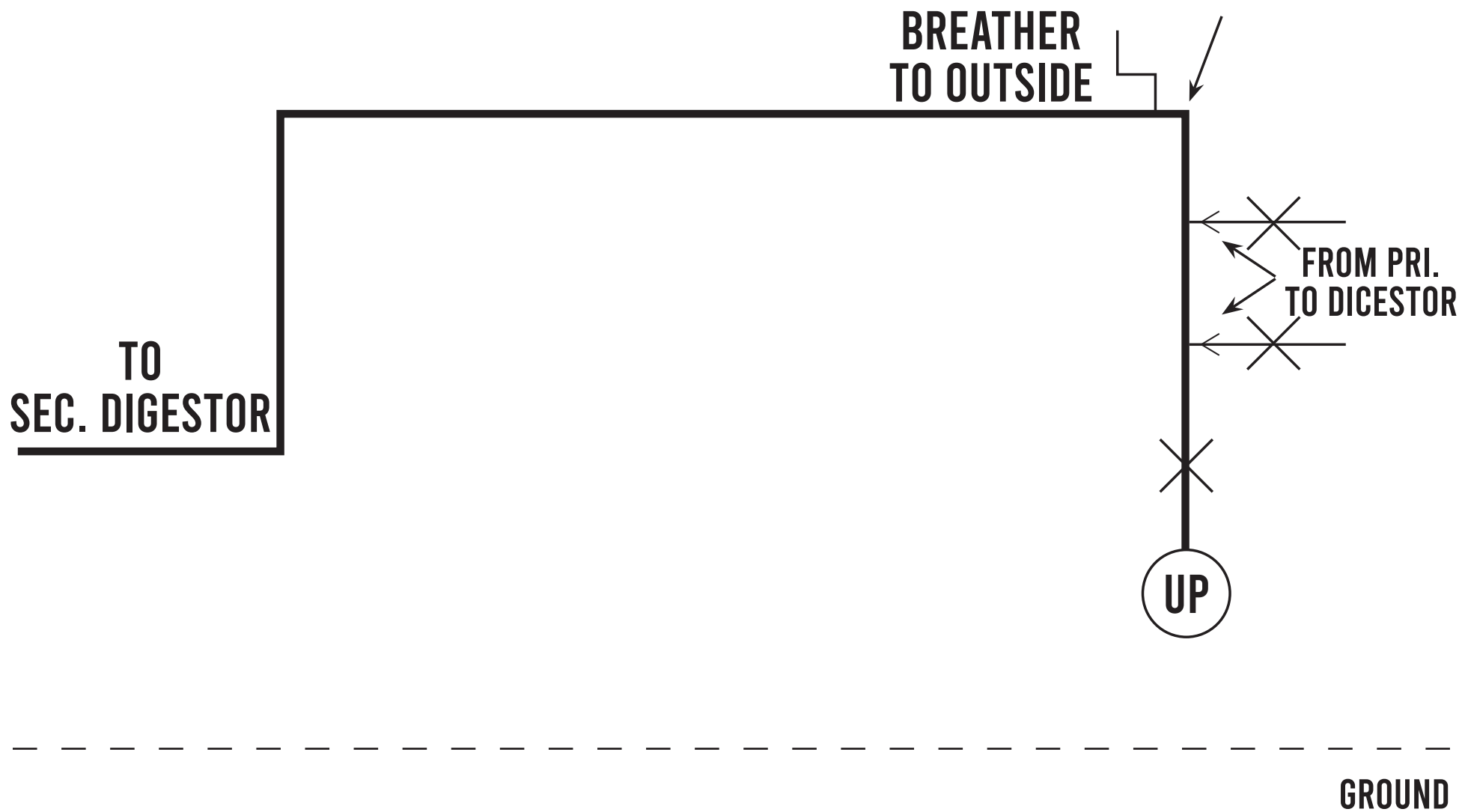
FLOW CAN GO EITHER
WAY ON THEIS LINE
DEPENDING ON VALVES

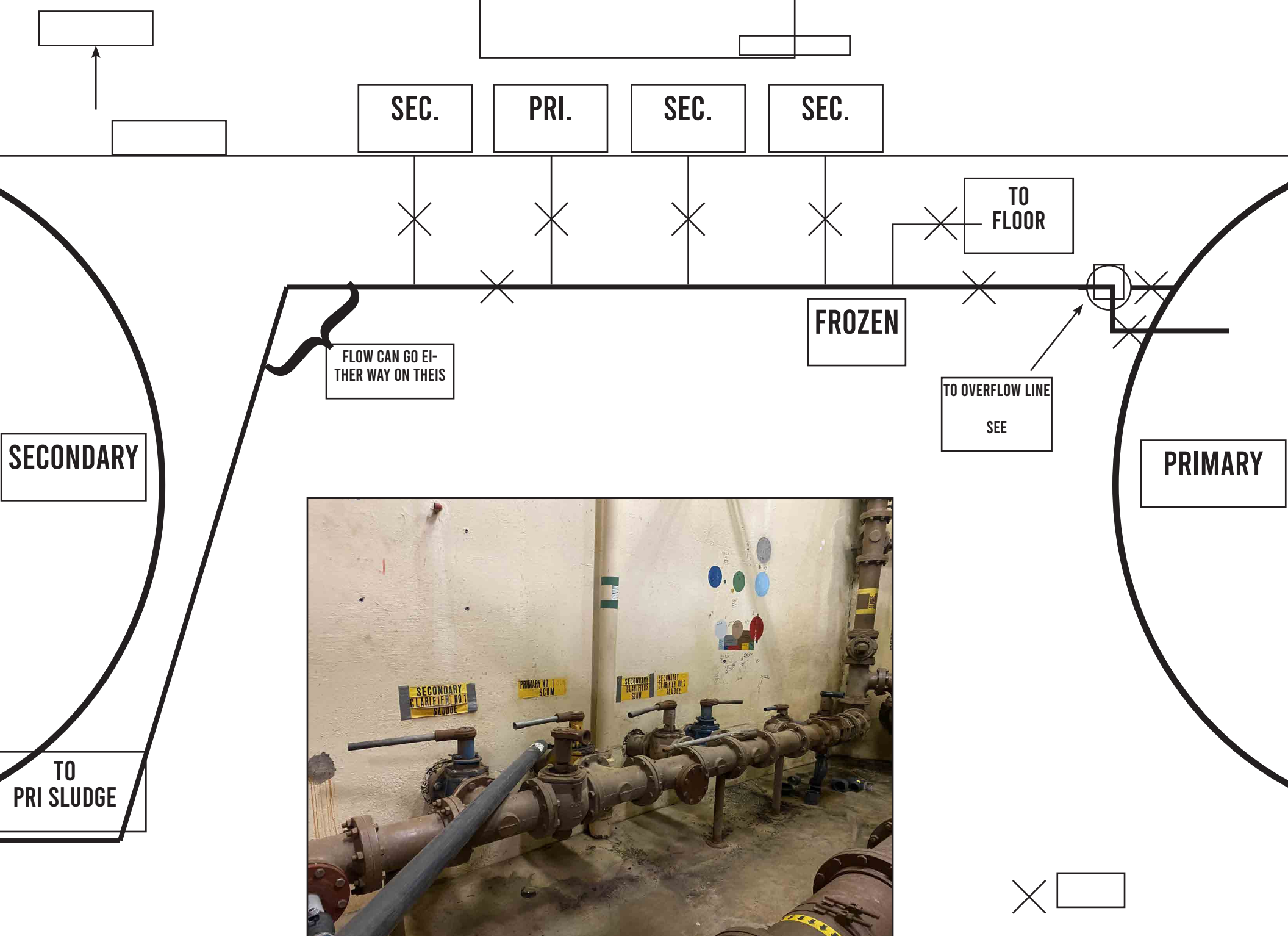
SECONDARY
DIGESTOR

TO
PRI SLUDGE
PUMPS

✕ VALVE



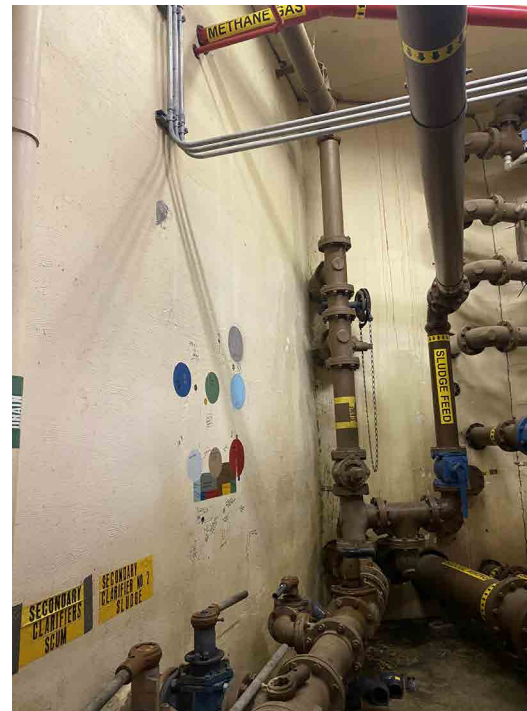






**BREATHER
TO OUTSIDE**

**TO
SEC. DIGESTOR**



**FROM PRI.
TO DICESTOR**

UP